

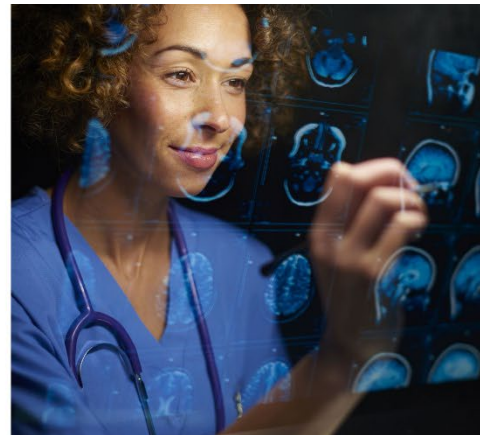
Inova Continuing Medical Education

## 10th Annual National Neuroscience Review Conference

**In-person event**

**Friday, April 17, 2026 | 8 a.m. – 2 p.m.**

**Inova Center for Personalized Health Conference Center**



Dear Potential Exhibitor,

On behalf of Dr. James Leiphart, we would like to request your exhibitor support at our CME Event, 10<sup>th</sup> Annual National Neuroscience Review Conference on Friday, April 17, 2026. Sessions will be held at the Inova Center for Personalized Health Conference Center (ICPH). This event is being offered as a hybrid option to allow for a larger reach of attendees. We are expecting over 120 attendees.

We have transitioned our exhibitor registration to an online platform that will streamline the process, ensuring greater ease for exhibitors and a secure method of paying via credit card. Those paying by check will still need to fill out the online form and indicate payment type.

**Register at: <https://cme.inova.org/content/april-17-2026-exhibitors-only-10th-annual-national-neuroscience-review-conference#group-tabs-node-course-default6>**

The table cost is \$2,500 for full in-person participation and will include the following:

**Premium In-Person: \$2,500**

- Prime table location, including a 6' undraped display table with three chairs
- Full access to conference sessions and meals for three exhibit representatives
- Verbal and name recognition the day of the conference with signage, podium mention and on screen during the conference
- Company name recognition on:
  - Marketing emails
  - Introduction slides, break slides, and closing slides
  - Post-event follow-up attendee email
  - Exhibitor page on event website
  - Post attendee registration list (for those that opt in)
  - Highlighted Website Listing - Your company's sales contact information will be prominently displayed on the event website. This listing will feature:
    - Company Name & Sales Contact Person Email Address

**Catering Sponsor Add-ons (Optional):** Includes company name on buffet table signage.

- Breakfast: \$1,000
- Lunch: \$1,500



- AM Break: \$500

This program is intended for physicians in the following medical specialties: critical care (intensivists), emergency medicine, family practice, general practice, general surgery, geriatric medicine, geriatric psychiatry, internal medicine, interventional pain management, interventional radiology, neurology, neuropsychiatry, neurosurgery, pain management, physical therapy, physical medicine and rehabilitation, preventive medicine, psychiatry, and vascular surgery.

The Accredited Provider is Inova Health System Office of Continuing Medical Education, and the accrediting body is the Medical Society of Virginia. Our Tax ID is 54-0620889. Learners will be eligible to receive up to 4.50 AMA Category 1 credits™ for attending this activity. In accordance with ACCME regulations the exhibit space will be located outside and separate from all CME learning spaces.

If approved, funds for this activity can be paid to:  
Inova Health System's Office of Continuing Medical Education,  
8095 Innovation Park Drive, Fairfax, VA 22031  
Tower C; Floor 9  
Attn: Claudia Ventura, Senior Program Manager

Thank you for your consideration. Please contact me at 571-239-6653 (cell) or [Claudia.ventura@inova.org](mailto:Claudia.ventura@inova.org) if you have any questions or need any further information.

Sincerely,

Claudia Ventura  
Senior Program Manager, Inova Office of Continuing Medical Education